

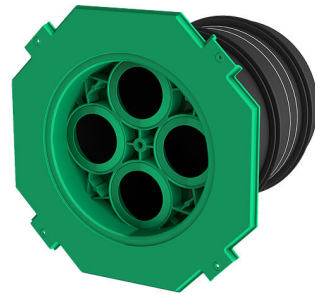
# ETGAR wall sleeve for building services outlet

For ETGAR BHP

## HAW-M ETGAR FR

Article no.: 3030458206, GTIN: 4052487239912

For installation flush to the formwork into all common wall types.  
With spigot flange and three 3-web gaskets (e.g. as water barrier in double/element walls).



Picture may differ from selected product

## FACTS

### Dimensions:

- minimum wall thickness: 200 mm
- Maximum wall thickness: 400 mm

### Application range:

- DIN 18533 W1-E, DIN 18533 W2.1-E
- Waterproof concrete stress class 1, waterproof concrete stress class 2

# FEATURES

Item:	Hausausführung ETGAR Futterrohr
wall thickness (mm):	400