

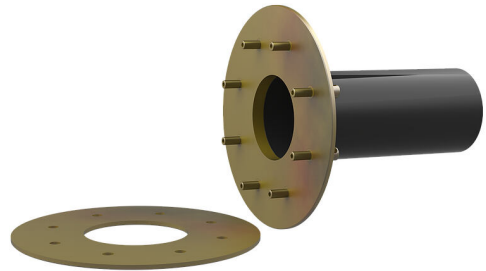
Fixed/loose flange wall sleeve galvanised

for setting in concrete for black tank

FLFE1x200/0/300 DIN18533 St-A3C

Article no.: 3030353476, GTIN: 4052487227025

For setting in concrete or mortar in walls, ceilings or floors.



Picture may differ from selected product

FACTS

Advantages:

- flexible wall thickness adjustment thanks to plastic wall sleeve
- Installation flush with formwork

Scope of delivery:

- 1 piece Fixed/loose flange wall sleeve
- Fastenings for concrete
- Bolts and nuts
- 2 pieces closing covers

Dimensions:

- for wall thicknesses of up to 500 mm
- Design according to DIN 18533 includes: underground structural components
- Standard fixed flange $\varnothing a$ equal to the relevant wall sleeve $\varnothing i$ + approx. 330 mm (for one passage)

Application range:

- DIN 18533 W2.1-E, DIN 18533 W2.2-E

Material:

- Fixed/loose flange wall sleeve steel galvanised (gv)
- Wall sleeve: plastic PVC-U
- Closing cover: PE
- Bolts and nuts: steel galvanised (gv)

Tightness:

- gastight and watertight

FEATURES

Wall sleeve ID (mm) D1:	200
Fixed flange OD (mm) D2:	530
Loose flange OD (mm) D3:	520
Wall sleeve wall thickness (mm) S:	2
wall thickness (mm):	300

PICTURES



ACCESSORIES REQUIRED



Rubber inlays