

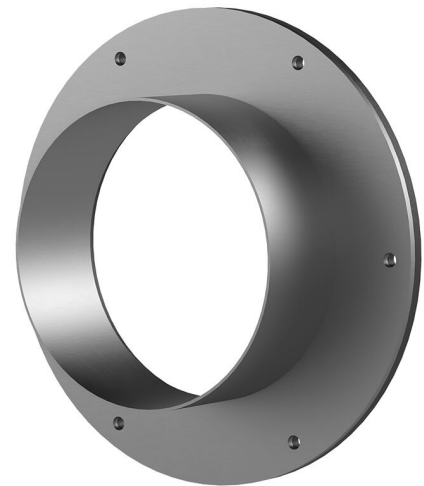
# Stainless steel flange

## for retrofit dowelling

### FA1x450/80/0 A2

Article no.: 910900002, GTIN: 4052487021128

For dowelling through existing recesses/break-throughs in walls or floor slabs.



Picture may differ from selected product

## FACTS

### Advantages:

- Tailor-made designs can also be produced
- Also available with multiple entries and in a variety of diameters

### Scope of delivery:

- 1 piece Stainless steel flange
- 1 piece surface seal
- Fastenings

## Dimensions:

- Standard flange dimensions OD or  $\square$ a equivalent to the corresponding wall sleeve ID + approx. 150 mm (for one entry, see the brochure for detailed information)
- Standard upper length: 80 mm

## Application range:

- DIN 18533 W1-E, DIN 18533 W2.1-E
- Waterproof concrete stress class 1, waterproof concrete stress class 2

## Material:

- Flange: stainless steel V2A (AISI 304L) or V4A (AISI 316L)
- Surface seal: EPDM
- Fastenings: stainless steel V4A (AISI 316L)

## FEATURES

Wall sleeve ID (mm):	450
Wall sleeve wall thickness (mm) S:	3
Flange standard dimensions (mm):	600

## PICTURES



# ACCESSORIES REQUIRED



EGO sealant