

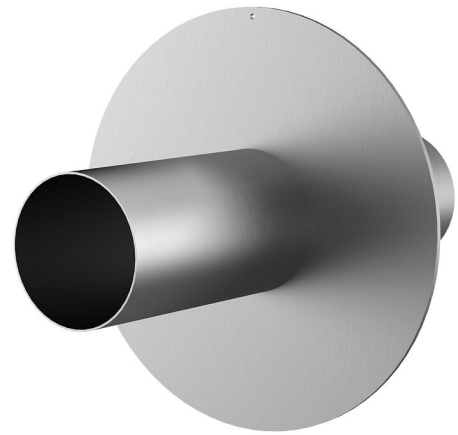
# Stainless steel wall sleeve with puddle flange

for setting in concrete

## FUM1x125/100/100 A2

Article no.: 911209800, GTIN: 4052487137287

Puddle flange serves as water barrier and creates a force-fit connection.



Picture may differ from selected product

## FACTS

### Advantages:

- Simple installation in the formwork
- Also available with multiple entries and in a variety of diameters, resulting in compact construction

### Scope of delivery:

- With closing covers on both sides

### Dimensions:

- Flange OD equivalent to the corresponding wall sleeve ID + approx. 210 mm (for one entry, see the brochure for detailed information)



## Properties:

- FHRK-certified

## Application range:

- Waterproof concrete stress class 1, waterproof concrete stress class 2

## Material:

- Wall sleeve: stainless steel V2A (AISI 304L) or V4A (AISI 316L)
- Closing cover: PE

## Tightness:

- gastight and watertight

## FEATURES

Wall sleeve ID (mm):	125
External diameter of flange (mm):	329
Wall sleeve wall thickness (mm) S:	2
Length (mm):	200