

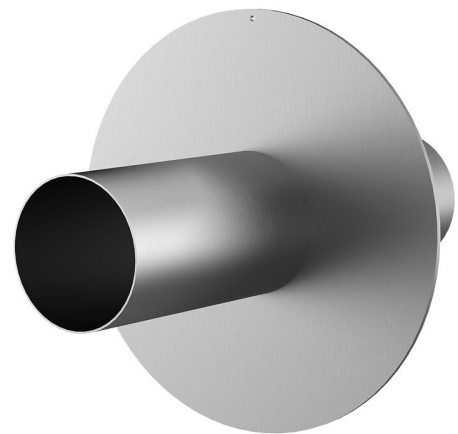
Stainless steel wall sleeve with puddle flange

for setting in concrete

FUM1x80/120/120 A2

Article no.: 911009900, GTIN: 4052487137218

Puddle flange serves as water barrier and creates a force-fit connection.



Picture may differ from selected product

FACTS

Advantages:

- Simple installation in the formwork
- Also available with multiple entries and in a variety of diameters, resulting in compact construction

Scope of delivery:

- With closing covers on both sides

Dimensions:

- Flange OD equivalent to the corresponding wall sleeve ID + approx. 210 mm (for one entry, see the brochure for detailed information)



Properties:

- FHRK-certified

Application range:

- Waterproof concrete stress class 1, waterproof concrete stress class 2

Material:

- Wall sleeve: stainless steel V2A (AISI 304L) or V4A (AISI 316L)
- Closing cover: PE

Tightness:

- gastight and watertight

FEATURES

Wall sleeve ID (mm):	80
External diameter of flange (mm):	284
Wall sleeve wall thickness (mm)	2
S:	
Lenght (mm):	240