

Single-line building entry ZAPPO

for buildings with a basement

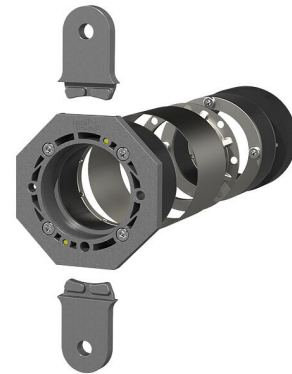
ESH PolySafe VT75

Article no.: 1910010000, GTIN: 4052487165303



- **No groundwork at the property**
- **Continuous gastight empty conduit system**

For the reliable sealing of gas, drinking water, power or telecommunications services. A drilling rocket is used to excavate a continuous empty conduit route from the basement of the building to the edge of the property.



Picture may differ from selected product

FACTS

Advantages:

- Can be fully installed from the inside of building
- Ideal for applications in which the building connection route has been built over or is difficult to access
- Suitable for all services
- Including support pipe for optional use to compensate for uneven contact surfaces

Scope of delivery:

- 1 piece Octagonal inner sealing element
- 2x self-tapping screws M8x35 for sealing service lines
- 1 piece Support pipe
- 1 piece Octagonal inner sealing element
- Outer sealing element with injection hose
- 2 pieces twist protection flaps
- 2 pieces self-tapping screws M8x45 and washers for sealing service lines



Dimensions:

- Core drill: ID: 99 - 103 mm
- Driving pipe: OD 75 mm

Properties:

- DVGW-certified
- For gas combined building entries manufactured by Schuck (DN25, 32, 40) and RMA (DN25)

Application range:

- DIN 18533 W1-E
- Waterproof concrete stress class 1, waterproof concrete stress class 2

Material:

- Front panel and twist protection flaps: Fibre glass reinforced polyamide
- Rubber: EPDM
- Rear press ring and outer sealing element: stainless steel V2A (AISI 304L)
- Centring ring: stainless steel V2A (AISI 304L)
- Screws: stainless steel V2A (AISI 304L)
- Screws: stainless steel V2A (AISI 304L)

Tightness:

- gastight and watertight to 1.0 bar

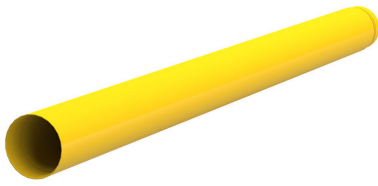
Tests/Standards:

- DVGW VP 601

PICTURES



ACCESSORIES REQUIRED



ZAPPO driving pipe



ZAPPO driving pipe



ZAPPO assembly kit



2-component resin iM3000