

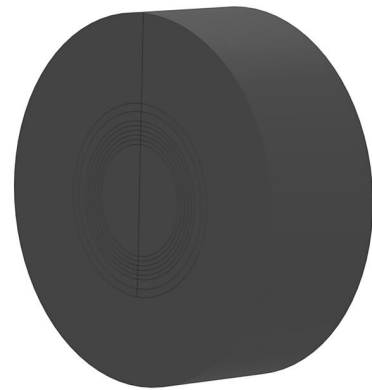
# Split interchangeable insert with segment ring technology

for cable seal at the end of the spiral hose

## WE160 SG 1x48-83

Article no.: 825817116, GTIN: 4052487164719

For installation in the KES150 MA WE sleeve and to seal cables with the rubber press method at the end of the Hateflex spiral hose 14150.



Picture may differ from selected product

## FACTS

### Advantages:

- Segmented ring technology for adjustment to three or five different pipe diameters on site
- The interchangeable insert is installed after the cables have been laid
- The entire cross-section of the empty conduit system is used when cables are laid

### Scope of delivery:

- Blind plugs

## Dimensions:

- OD: 160 mm
- Sealing width: 60 mm
- Maximum configuration: according to variant table

## Material:

- EPDM

## Tightness:

- gastight and watertight to 2.5 bar

## FEATURES

Number of cables/medium:	1
Area of application cable OD (mm):	48 - 83

## ACCESSORIES REQUIRED



Toolset for KES-M