

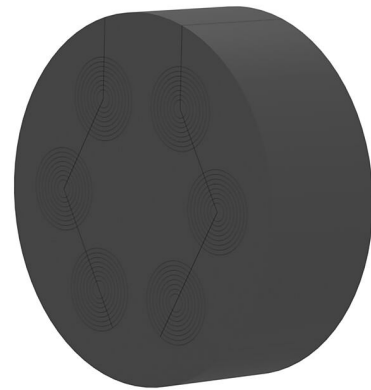
Split interchangeable insert with segment ring technology

for cable seal at the end of the spiral hose

WE160 SG 6x8-36

Article no.: 825817114, GTIN: 4052487164696

For installation in the KES150 MA WE sleeve and to seal cables with the rubber press method at the end of the Hateflex spiral hose 14150.



Picture may differ from selected product

FACTS

Advantages:

- Segmented ring technology for adjustment to three or five different pipe diameters on site
- The interchangeable insert is installed after the cables have been laid
- The entire cross-section of the empty conduit system is used when cables are laid

Scope of delivery:

- Blind plugs

Dimensions:

- OD: 160 mm
- Sealing width: 60 mm
- Maximum configuration: according to variant table

Material:

- EPDM

Tightness:

- gastight and watertight to 2.5 bar

FEATURES

Number of cables/medium:	6
Area of application cable OD (mm):	8 - 36

ACCESSORIES REQUIRED



Toolset for KES-M