

# Outer sealing element module 6.2

## for single-line building entry systems basic variant 1

### ESH PolySafe M6.2

Article no.: 1910000109, GTIN: 4052487163552



- **Tested according to DIN 18533**

Rubber compression seal with overlying flange for integration in existing damp-proofing in buildings with cellar. With a sealing width of 80 mm, module 6.2 is able to seal both the concrete formwork of the double wall/element wall and the in-situ concrete. Module 6.2 provides a seal against both the concrete shells of the double/element wall and the pre-mixed concrete filling. This prevents rising water in the area between the element wall and the concrete filling from penetrating the core drill hole.



Picture may differ from selected product

## FACTS

### Advantages:

- Can be installed easily and quickly on-site
- Integration of existing building seals to DIN 18195 Part 4

### Dimensions:

- Core drill/wall sleeve ID: 99 - 103 mm
- Outer diameter of flange: 160 mm
- Sealing width: 80 mm

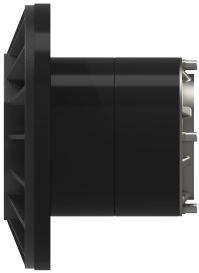
### Application range:

- DIN 18533 W1-E, DIN 18533 W2.1-E
- Waterproof concrete stress class 1, waterproof concrete stress class 2

## Material:

- Rubber: EPDM
- Flange: glass fibre reinforced polyamide
- Flange seal: foam rubber/NBR
- Press plates: stainless steel V2A (AISI 304L)
- Screws and washers: stainless steel V2A (AISI 304L)

## PICTURES



## ACCESSORIES REQUIRED



Basic variant with inner seal