

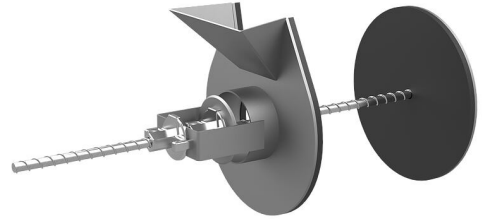
Compound injection unit

for the wet installation of wall sleeves

VFV200

Article no.: 1591000127, GTIN: 4052487038966

Used for retrofit wet installation of wall sleeves (SFR) in core drills or break-throughs.



Picture may differ from selected product

FACTS

Advantages:

- Can be used in buildings with sealing to DIN 18195 Part 4
- Can be installed projecting on the outside in order to accommodate a channel
- Easy adjustment to the wall thickness on site

Application range:

- DIN 18533 W1-E

FEATURES

| | |
|--------------------------------------|-----------|
| Suitable for: | SFR200/X |
| Core drilled hole/wall duct ID (mm): | 300 - 350 |