

System cover

with sleeve method for corrugated cable ducts

HSI150 MA168 WR

Article no.: 2126010001, GTIN: 4052487058308



- **Mechanical fixing (bayonet) and seal (clamping nut) act independently**
- **Bayonet system with return lock and locking screw connection (for protection against automatic opening)**
- **Patented ring clip method**



Picture may differ from selected product

For use in wall insert and plastic flange HSI150. For connecting corrugated cable ducts. The seal is created with the sleeve method, with a rubber sleeve being clamped onto both the system cover and the duct with clamping straps.

FACTS

Advantages:

- Mechanically stable, elastic connection with system sleeve

Scope of delivery:

- incl. sleeve with clamping straps
- incl. ring clips

Properties:

- FHRK-certified
- For the duct connection $D_a=160$ mm, we recommend using the spacer HSI AH40 to extend the centre distance when installing multiple HSI150 wall inserts



Material:

- System cover: polycarbonate
- Clamping nut: PC/PBT blend
- Sleeve: EPDM
- Clamping straps: W4
- Ring clips: stainless steel

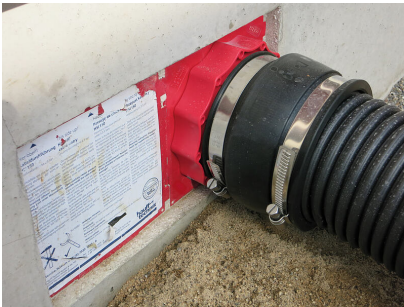
Tightness:

- gastight and watertight to 0.5 bar

FEATURES

Pipe OD: 168
Manufacturer: Fränkische Rohrwerke
Type: KABUFLEX

PICTURES



ACCESSORIES REQUIRED



Flexible socket wrench