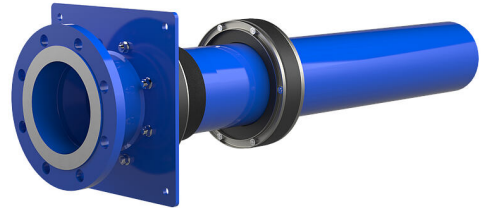


Combined building entry for water DN 150 for buildings with a basement

ROKA WF-TE-ARO-DN150/160-PN16 BL1120

Article no.: 1990800095, GTIN: 4052487054478

Combined building entry for water manufactured by Schuck, DN 150, for use in core drills or wall sleeves ID 250 mm.



Picture may differ from selected product

FACTS

Advantages:

- Can be installed easily and quickly on-site
- Dry installation

Scope of delivery:

- 1 piece Combined building entry for water manufactured by Schuck, DN 150, includes protection against pulling out and twisting and pre-assembled sealing elements

Dimensions:

- Core drill/wall sleeve ID: 250 mm
- Wall thickness: 240 - 700 mm

Application range:

- Waterproof concrete stress class 1, waterproof concrete stress class 2

Material:

- Seal insert: stainless steel V2A (AISI 304L)
- Rubber: EPDM

Tightness:

- gastight and watertight to 1.0 bar

PICTURES

