

# Double wall insert

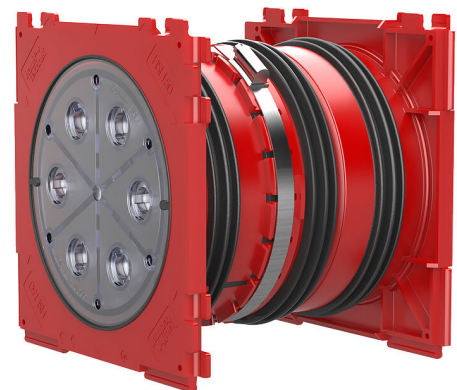
adjustable length, for setting in concrete

## HSI150 1x1 K2 Varia 260-365

Article no.: 3030300085, GTIN: 4052487134231



- **Stepless adjustment to the required wall thickness on site**
- **In total, three spray applications of 3-ribbed seal are applied to create a pressure-tight seal with the concrete**
- **Quality mark on both sides: sealed ex works. Option to check for accidental or unauthorised opening of the closing cover**



Picture may differ from selected product

For the gastight and watertight connection on both sides of system seals for cables and cable ducts and maximum flexibility for subsequent use.

## FACTS

### Advantages:

- System seal can be connected on both sides (e.g. cable duct connection and cable seal)
- Packages can be created with frame connection system on site
- Can be used in all types of wall including element constructions

### Scope of delivery:

- 2 pieces pressure-tight closing covers
- 1 piece Hex key with integrated torque limitation



## Dimensions:

- Frame dimensions: 220x 220 mm
- Centre distance: 210 mm
- Minimum wall thickness: 200 mm

## Application range:

- Waterproof concrete stress class 1, waterproof concrete stress class 2

## Material:

- Wall insert: ABS with TPE 3-ribbed seal
- Adapter pipe: PVC
- Clamping strap: Steel St sn (W1)
- Closing cover: ABS with TPE seal

## Tightness:

- gastight and watertight to 2.5 bar
- radon tight

## FEATURES

wall thickness (mm):	260-365
Packing unit:	1

## PICTURES

