

Earthing entry

for building entry to DIN 18533 (black tank)

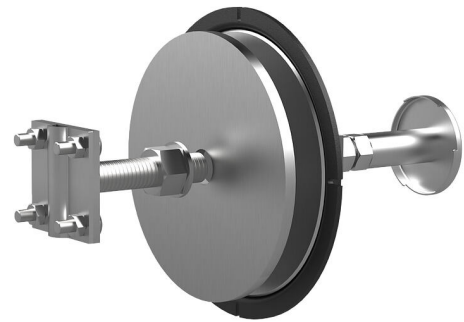
HEA W M16/400

Article no.: 1700041400, GTIN: 4052487136754



- **Patented twist resistance provided by special contour of contact washer**

For wall installation flush with formwork in buildings with outer seal to DIN 18533. The outer seal is integrated with a fixed/loose flange. Earthing connections can be made with the cross-clamp or the connection thread.



Picture may differ from selected product

FACTS

Advantages:

- Suitable for black tank
- Watertight connection thread on both sides (blind hole)
- Resistant to corrosion

Scope of delivery:

- 1 piece Cross-clamp with M20 thread

Dimensions:

- Fixed/loose flange: OD 210 mm
- Conductor core: round, Ø 25 mm
- Conductor core link: with M16 threaded bolt
- Contact washer: Ø 72 mm
- Minimum wall thickness: 180 mm

Application range:

- DIN 18533 W1-E, DIN 18533 W2.1-E, DIN 18533 W2.2-E

Material:

- Fixed/loose flange: V4A (AISI 316L)
- Conductor core and contact washers: stainless steel V4A (AISI 316L)
- Conductor core link: St37, galvanised
- Protective covers: PE
- M20 cross-clamp: stainless steel V4A (AISI 316L)

Tests/Standards:

- To DIN 18014
- DIN EN 62305-3
- VDE 0185-305-3 (with lightning protection application)

FEATURES

wall thickness (mm):	400
Threaded bolt:	M16