

# Insulated earthing entry

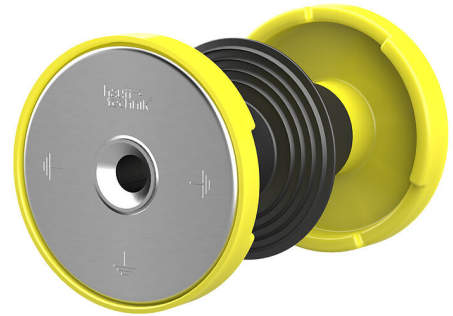
## HEA IS M12/250

Article no.: 1710020157, GTIN: 4052487045391



- **Patented twist resistance provided by special contour of contact washer**

Specifically for station construction. Installed during formwork work. Earthing connections to the building can be made with the thread on both sides in the electrically isolated conductor core.



Picture may differ from selected product

## FACTS

### Advantages:

- Isolated earth for separate checking of earthing
- Water barrier for tightness with concrete
- Watertight M12 connection thread on both sides (blind hole)
- Resistant to corrosion
- Short-circuit-tested

### Scope of delivery:

- Protective cover on both sides

### Dimensions:

- Conductor core: round,  $\varnothing$  25 mm
- Contact washer:  $\varnothing$  72 mm
- Minimum wall thickness: 70 mm

## Application range:

- Waterproof concrete stress class 1, waterproof concrete stress class 2

## Material:

- Conductor core and contact washers: stainless steel V4A (AISI 316L)
- Protective cover: cellular rubber
- Electrical insulation: EPDM
- Water barrier: EPDM

## Tests/Standards:

- To VDE 0101, EN 50522

## FEATURES

wall thickness (mm):	250
Threaded bolt:	M12

## PICTURES

