

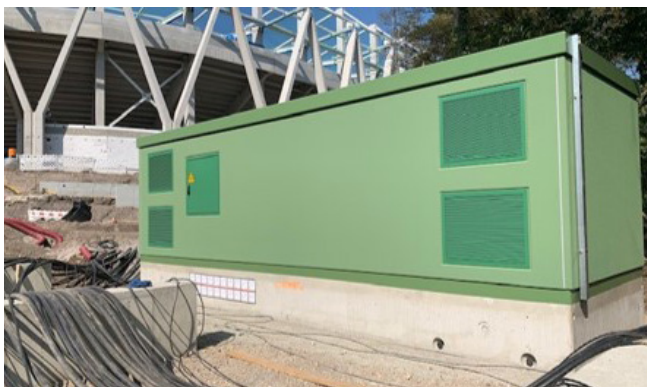
Always. Reliable. Tight.



A NEW HOME IS BUILT FOR THE BLUE & WHITES!

NEW CONSTRUCTION OF THE KARLSRUHE WILDPARK STADIUM

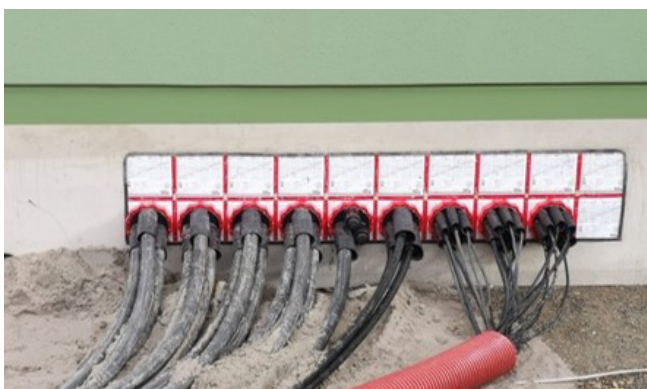
A NEW HOME IS BUILT FOR THE BLUE & WHITES! PROJECT DESCRIPTION



Transformer stations from Scheidt GmbH & Co. KG supply the new stadium and premises with power and communication technology.



Scheidt GmbH & Co. KG opted for the HSI150 as a permanently gas and watertight cable entry.



Currently unused openings are sealed gas and watertight with a VS blind plug.

A NEW HOME IS BUILT FOR THE BLUE & WHITES!

PROJECT DETAILS AND SOLUTIONS



The waiting has been worth it! By mid-2022, a modern future-proof football stadium commissioned by the city of Karlsruhe is to be completed for more than 34,000 spectators. The total cost of the project amounts to some 123 million euros.

PROJECT DETAILS	
Location	Karlsruher Sport-Club Mühlburg-Phönix GmbH & Co. KGaA Adenauerring 17 76131 Karlsruhe
Client	Eigenbetrieb „Fußballstadion im Wildpark“ Kaiserstraße 99 76133 Karlsruhe
Installation company	Wirth Elektrotechnik GmbH Dossenbergerstraße 40 89561 Dischingen

HAUFF-TECHNIK SOLUTIONS	
Specifications	HSI 150 cable entry systems HSI150 system covers with heat shrink sleeves
Requirements	Permanently gas and watertight cable entries
Products used	HSI150 - K2/x 2 wall inserts System covers with heat shrink sleeves: HSI150 D3x58 WS HSI150 D7x33 WS VS blind plug

Hauff-Technik GmbH & Co. KG

Robert-Bosch-Straße 9
89568 Hermaringen, GERMANY

Tel. +49 7322 1333-0

Fax +49 7322 1333-999

office@hauff-technik.de